



bridging the gap between research, policy and practice

RIBA London December 2011

Susannah Bowyer

Research and development manager, research in practice

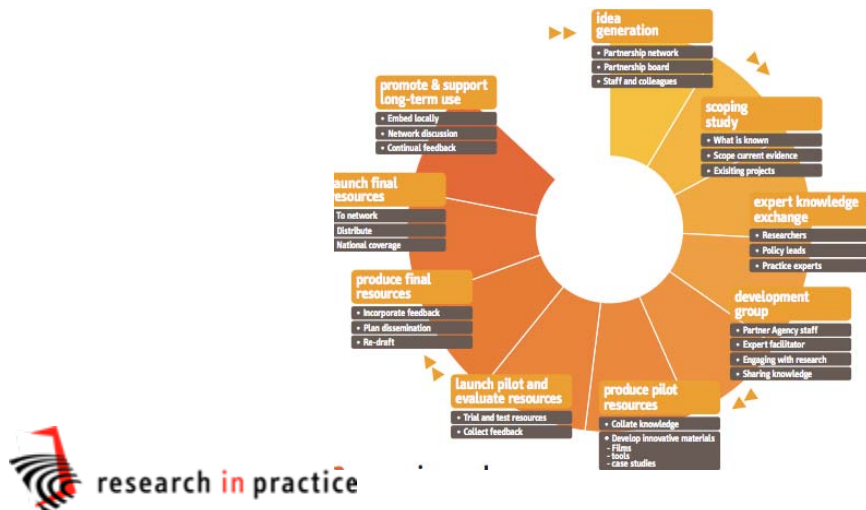
360° support for evidence-informed practice



- conferences
- workshops
- in-house delivery

The screenshot shows the research in practice website with a navigation menu and several featured content sections:

- research briefings**
 - champions for children: Research briefings for elected local and national representatives. Example: "Protecting children and young people from significant harm".
 - performance pointers: Briefings focusing on the national indicators (NIs) for children's services. Example: "Performance Pointers: Services for disabled children".
 - prompt topic briefings: Rapid response briefings on key topics for second tiers. Example: "16 Family and Friends Care".
 - ecm research briefings: Accessible briefings to support and develop practice. Example: "16 Family and Friends Care".
- Other sections include: research and policy updates, evidencebank, audio series, research briefings (champions for children, performance pointers, prompt topic briefings, ecm research briefings), welsh briefings, research reviews, literature reviews, and news feeds.



The cover features the research in practice logo and the title "Safeguarding in the 21st century - where to now" by Jane Barlow with Jane Scott. It includes a photograph of a young child and logos for Darlington, the Department for Education, and the Children's Society. The website www.rip.org.uk is also listed.

The cover features the research in practice logo and the title "resilience in children and young people" with the subtitle "Threats, assets and interventions". It includes a photograph of a young child playing with blocks and logos for Darlington, the Department for Education, and the Children's Society. The website www.rip.org.uk/frontline is also listed.

research findings need to be engaged with as part of active social processes, interpreted in local contexts, and integrated with current knowledge/experience

Davies and Powell (2010)

change projects >>>

idea generation

- Partnership network
- Partnership board
- Staff and colleagues

scoping study

- What is known
- Scope current evidence
- Existing projects

expert knowledge exchange

- Researchers
- Policy leads
- Practice experts

development group

- Partner Agency staff
- Expert facilitator
- Engaging with research
- Sharing knowledge

produce pilot resources

- Collate knowledge
- Develop innovative materials
 - films
 - tools
 - case studies

launch pilot and evaluate resources

- Trial and test resources
- Collect feedback

produce final resources

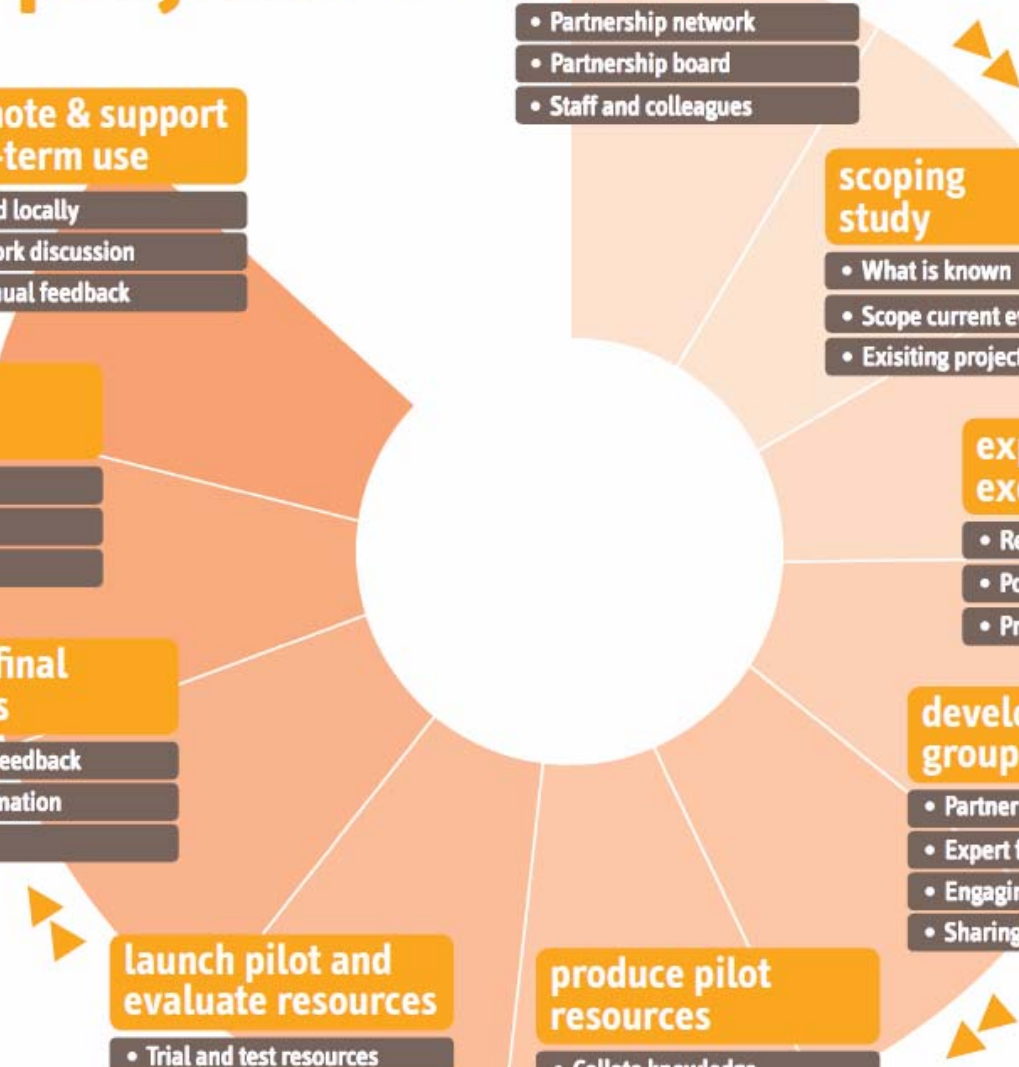
- Incorporate feedback
- Plan dissemination
- Re-draft

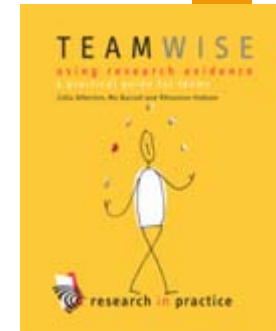
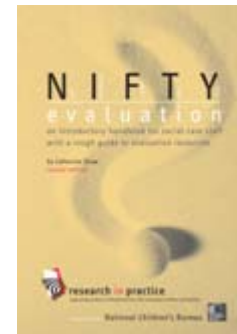
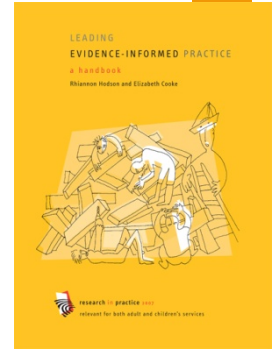
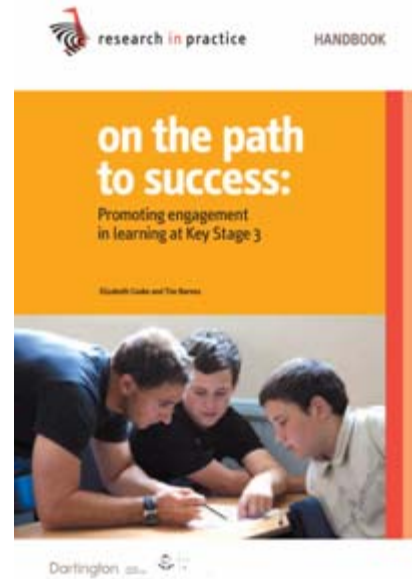
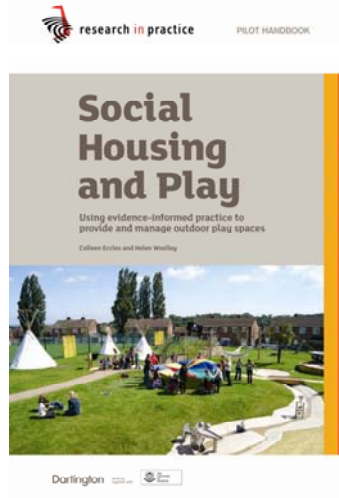
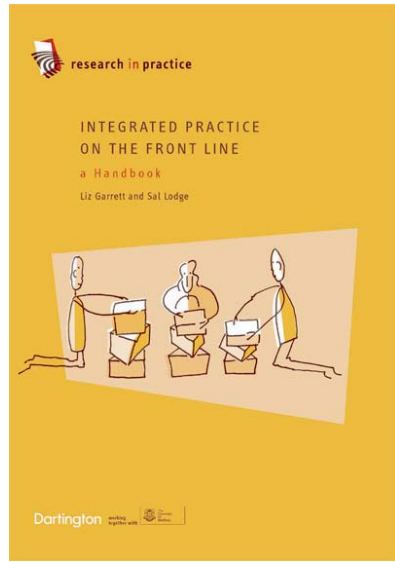
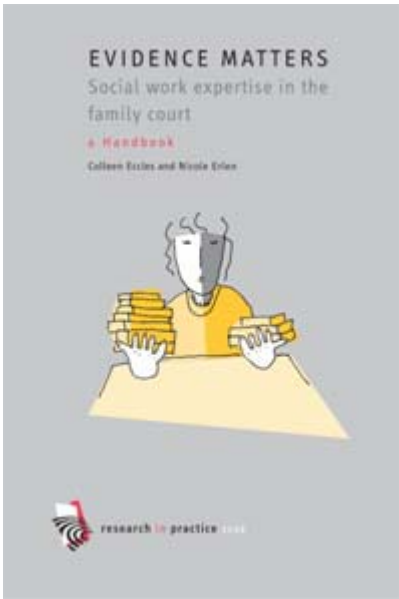
launch final resources

- To network
- Distribute
- National coverage

promote & support long-term use

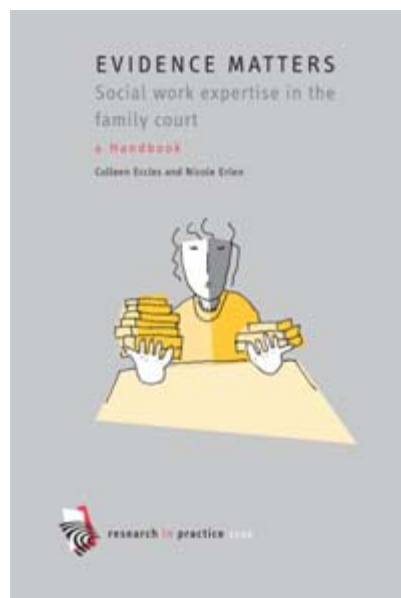
- Embed locally
- Network discussion
- Continual feedback



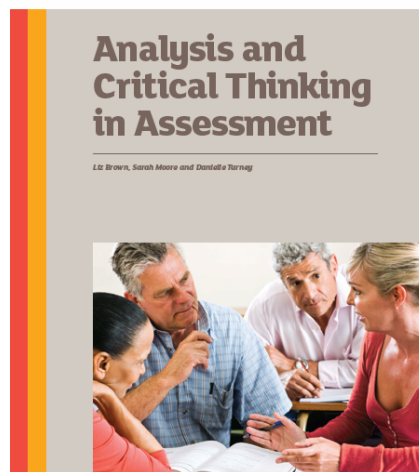


key issues identified through network exchange

- social workers' court reports
- analysis and critical thinking



 research in practice PILOT RESOURCES



Darlington 

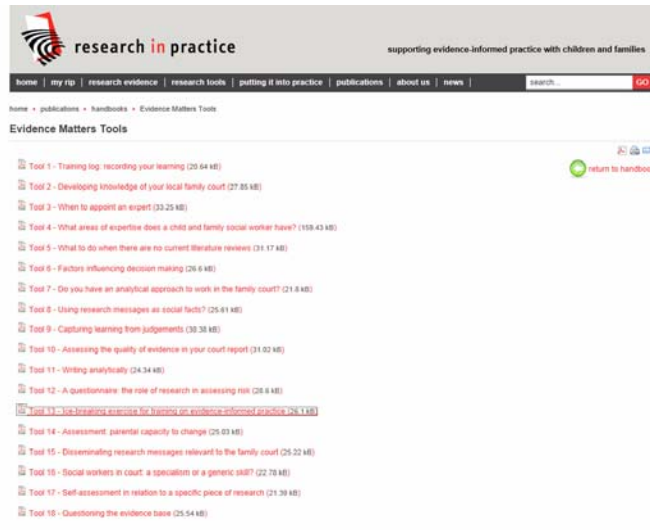
aims of evidence matters



- To promote evidence-informed policy development to support social workers in making decisions in their work with families prior to court
- to determine the appropriate use of research by social workers in cases reaching the family court
- to increase the confidence and competence of social workers in the family court and thereby increase the confidence of colleagues across professions in social workers as experts
- to produce guidance and tools to help social workers include reference to research from assessment through to plans presented to the family court

outputs of evidence matters

- handbook
- tools and films
- in house workshops
- identified need for Change Project on analysis and critical thinking





- e-learning
- learning events
- wales events

change project programme

- what is a change project?
- analysis and critical thinking in assessment
- growing digital
- play and housing
- NIFTY

what works for troubled children policy & practice links

analysis and critical thinking in assessment



This topic is one that has been a persistent concern in inquiries into child deaths and Serious Case Reviews. This Change Project explores the issues around the analysis of often very complex data found in social work assessments, and looks at how critical thinking and reflective practice can be promoted more effectively.

Who it's for

Managers responsible for improving practice around assessments in their agency, staff who are responsible for strategy and policy developments around assessments, staff who have been involved in innovative practice in improving the quality of assessments in their agency, social workers with a commitment to broadening their critical thinking skills.

Pilot resources

The pilot materials consist of seven resources that can be downloaded below:

1. The **core publication** contains key research and practice messages around analysis and critical thinking in assessment that form the basis of this package of materials.

Please let us know your thoughts on this resource [here](#)

2. The **literature review** was published in 2009 to help define the scope of the project. It draws together ideas from current literature about assessment and the kind of thinking that is needed to support this dimension of practice.

3. The **briefing for practitioners** contains a summary of the key messages and practice recommendations about improving analysis within the assessment process.

Please let us know your thoughts on this resource [here](#)

4. The **briefing for supervisors** contains a summary of the key messages and practice recommendations about how to provide effective, reflective supervision to improve critical thinking within your team and service.

Please let us know your thoughts on this resource [here](#)

5. The **briefing for strategic leads** contains a summary of the key messages and practice recommendations about improving analytical systems and processes at a strategic level.

Please let us know your thoughts on this resource [here](#)

6. The **exercises** are designed for individuals and teams to support analysis and critical thinking in assessment.

7. The **training materials** contain resources for delivering a workshop around this topic, including a programme, facilitator notes and

popular searches ▾

log out ▾

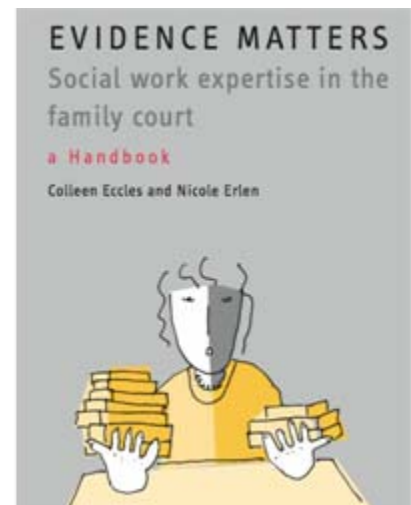
shopping basket ▲

Your Basket is currently empty.

Family Justice Review interim report (2011)

Judges increasingly do not trust assessments by local authorities. The commissioning of ever more expert reports is one result... This also affects the social workers, who lose confidence and can feel bullied by judges and advocates.

Improving the skills of court social workers is also important. We have heard examples of courts and judges providing mock court experience and feedback and believe these examples are important and should be encouraged



Supporting your response to

Family Justice Review

The Family Justice Review has focused attention once again on the need to develop social workers' professional expertise and court skills in order to reduce delay and improve outcomes in public law cases in the family courts.

We have been working to support the social work profession since 1996, and have developed a range of resources in collaboration with our network that address these critical areas of practice. Our Partners benefit from a combination of services and resources that provide a stable source of quality support at a time of significant change for the sector. Click on links below to access:

Evidence Matters:

Resources tailored to address the issue of social work expertise in the family court skills:

- Evidence Matters Handbook *Social work expertise in the family court* (Eccles and Erlen 2008)
- Evidence Matters events on our 2011-12 Learning Programme
- In-house workshops on this topic – by arrangement with your Regional Lead

Analysis and Critical Thinking in Assessment:

Good analytical assessment is an essential foundation for robust court reports:

- Analysis and Critical Thinking resources (pilot version available on the website, final versions forthcoming 2012)
- Analysis and Critical Thinking events on the 2011-12 Learning Programme
- In-house workshops on this topic – by arrangement with your Regional Lead

Parent and Baby Assessment Placement:

The Family Justice Review expresses concerns about the value of residential parenting assessments. This bundle of resources will support practice and service development around parent and baby assessment placement. More info on our website.

Frontline series

These succinct briefings provide a concise source of evidence to support robust court reports

- Child development
- Resilience in Children and Young People
- Attachment (forthcoming 2011)

The review's proposals are intended to work in tandem with those of Eileen Munro. You can see our response to the Munro report [here](#).



For all other queries please contact: [e: ask@rip.org.uk](mailto:ask@rip.org.uk) [t: 01803 867692](tel:01803867692)

www.rip.org.uk

key messages

- engage early and sustain engagement to facilitate full collaboration between practitioners and researchers
- evidence-informed resources deliver impact on practice